



GAT MONTHLY MEMBERSHIP PROGRESS REPORT

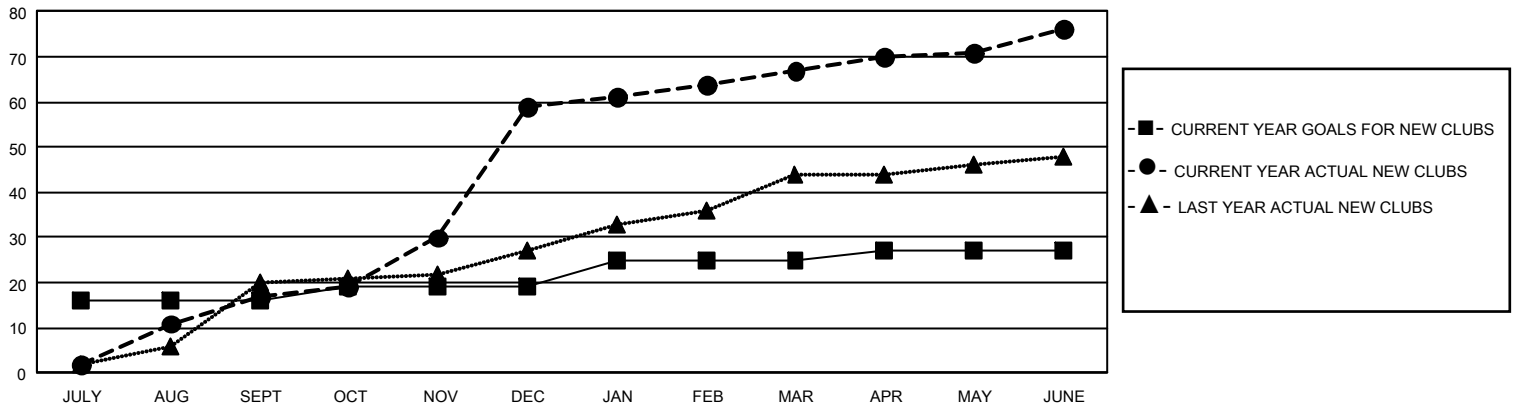
Results as of: 6/30/2025

GMT Constitutional Area 5 - M, Group F

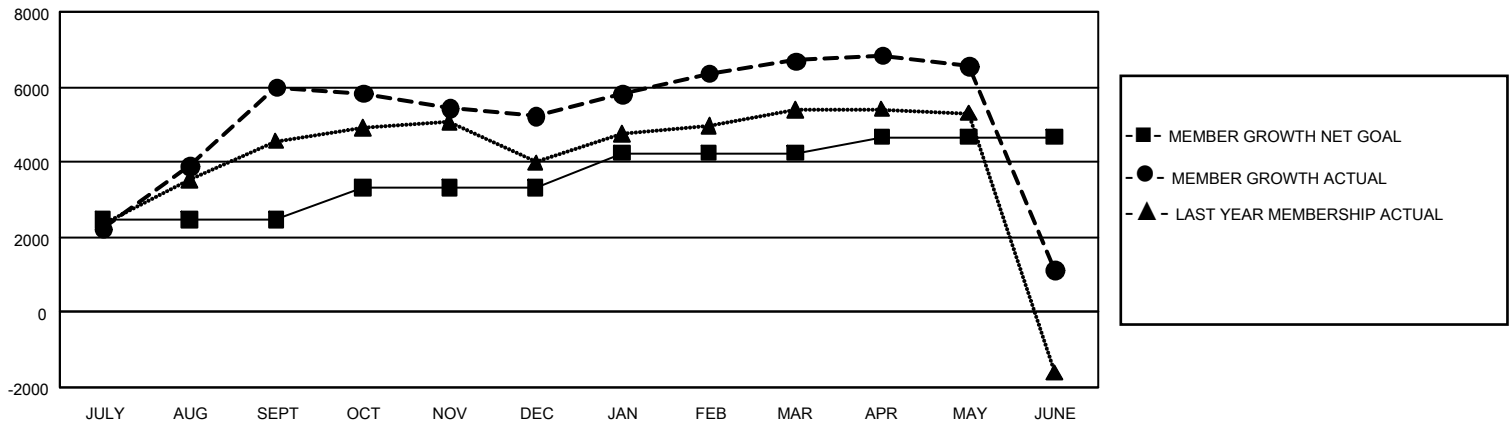
REPORT DOES NOT INCLUDE CLUBS IN UNDISTRICTED AREAS.

Clubs				Members			
RESULTS FOR 2024-2025				RESULTS FOR 2024-2025			
QUARTER	NEW CLUB GOAL	NEW CLUBS	DROPPED CLUBS	QUARTER	MEMBER GROWTH NET GOAL	MEMBER GROWTH ACTUAL	DROPPED MEMBERS ACTUAL (including transfers)
JULY/AUG/SEPT	48	17	5	JULY/AUG/SEPT	2466	7,415	897
OCT/NOV/DEC	9	42	4	OCT/NOV/DEC	836	1,870	2,572
JAN/FEB/MAR	18	8	3	JAN/FEB/MAR	938	2,119	217
APR/MAY/JUNE	6	9	10	APR/MAY/JUNE	430	861	6,180

GOALS AND ACTUAL NEW CLUBS CUMULATIVE



GOALS AND ACTUAL MEMBERS CUMULATIVE



DROPPED CLUBS: 22

1,143 CLUBS OF 1,280 ADDED
1 OR MORE NEW MEMBERS

GENDER DISTRIBUTION

MALE	27,925 (67.00%)
FEMALE	13,744 (32.97%)
NON BINARY	0 (0.00%)
PREFER NOT TO ANSWER	13 (0.03%)

DROPPED MEMBERS

DECEASED	136
CLUB CANCELLED	134
OTHER	9,589
TOTAL	9,859

[CLICK HERE FOR
CUMULATIVE MEMBERSHIP
DATA](#)

TOTAL FAMILY UNIT MEMBERS 3,452

FAMILY MEMBERS PAYING HALF DUES 2,234